



**SOFTGEN GROUP**

---



# SOFTGEN

---

The company "Softgen" was founded in 2008 and still successfully operates on the Georgian software market.

It is staffed with highly qualified and experienced employees who care about the sustainable and innovative development of the company.

During the history of the company, a number of important and innovative projects have been implemented and a number of software and technical solutions have been created, which are implemented and functions effectively in more than 150 different partner organizations.



# SOFTGEN

---



- ✓ 14 years of experience operating on Georgian and foreign markets
- ✓ More than 150 partners in both the private and public sectors
- ✓ Softgen team consists of more than 50 highly qualified professionals



# PTI – Management system for periodic technical inspection centers

---

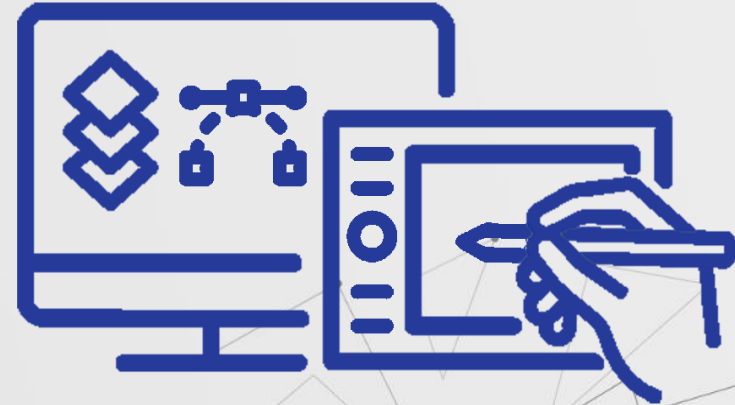


- ❖ PTI - Management system for vehicles periodic technical inspection centers is designed to administer and automate the work process of specialized accredited inspection centers.
- ❖ The system is fully compatible and meets the requirements of the (LEPL) National Accreditation Authority - the Accreditation Center and the technical regulations defined by the relevant resolutions of the Government of Georgia

# SOFTGEN PTI – Key features of the PTI management system

---

- ❖ Simple and handy WEB platform and User-Friendly interface
- ❖ Guaranteed data security, centralized accumulation and processing in a single system
- ❖ Integration of the technical inspection process with specialized equipment (Actia, Bosch, Cosber, Capelec, Maha and etc...)
- ❖ Real-time exchange of information with MIA and other regulatory institutions
- ❖ Process monitoring via smart cameras
- ❖ Possibility of inspection for special vehicles (Military vehicles, Ambulance, etc...)
- ❖ Technical support 24/7



# SOFTGEN PTI – Additional benefits

Statistical-analytical processing of separate settings

Simplified control and management of branches and users

Book a visit online or via operator

reservation of preferable date

Real-time feedback

SMS service

Calendar synchronization

Planning and administration of periodic service works (upgrade and calibration)

Generating documents (invoices) for organizations

Services for all categories of vehicles, including special equipment, trucks, trailers



# PTI – System Advantages

- ❖ Real-time processing of information received from MIA Service Agency
- ❖ Verification of compliance with the information received from the agency, both in relation to the documents and the visual inspection
- ❖ Processing of information received from the equipments, automated reflection and transmission in the system
- ❖ Automatic evaluation of results received from customized equipments according to current standards and automated determination of one by one tests status



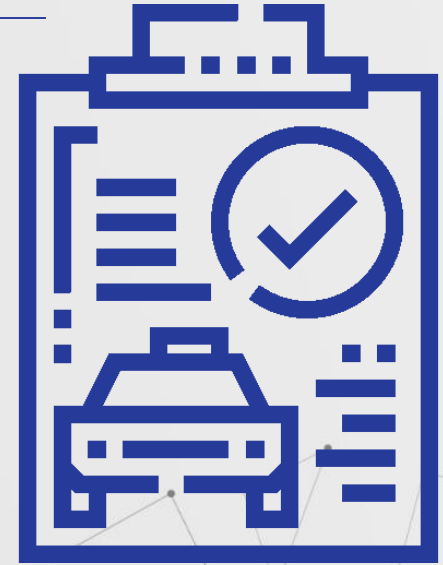
- ❖ Summary reporting of detected defects and determination of overall test results with the ability to instantly generate a statistical-annotational report
- ❖ Instant upload of test results to relevant agencies
- ❖ Centralized management of global changes (Change of established rule)

# SOFTGEN PTI – Testing Process

---

The testing process begins with the following information being entered into the program :

- ❖ Vehicle number plate
- ❖ Mobile phone number
- ❖ Physical person / the legal entity / Name and Surname
- ❖ Address
- ❖ Payment form



Fields required for registration of relevant documentation of a gas-fired vehicle at this moment are not mandatory

After pressing the save button, the information about the vehicle will be displayed in the appropriate field



# SOFTGEN PTI - Testing process

---

## Vehicle categories :

- ❖ M1 - not more than 8 seats
- ❖ M2 - bus up to 5 tons
- ❖ M3 - Bus more than 5 tons With 8 seats
- ❖ N1 - Truck up to 3.5 tons
- ❖ N2 - Truck more than 3.5 tons and up to 12 tons
- ❖ N3 - Truck more than 12 tons
- ❖ O1 - Trailers up to 0.75 tons
- ❖ O2 - Trailers over 0.75 tons and up to 3.5 tons
- ❖ O3 - Trailers over 3.5 tons and up to 10 tons
- ❖ O4 - Trailers more than 10 tons



# SOFTGEN PTI - Testing process

---

The system is adapted to run the process via tablets and mobile phones

The complete cycle is divided into tabs, where each tab includes a certain stage of testing:

- ❖ The identification tab contains all the information received by the service and necessary for the testing of this stage.
- ❖ The tab of detected defects includes all the items defined in accordance with the regulations, with the relevant statuses. The desired item can be found by choosing from the tree structure table and also by entering text in the search field.
- ❖ The efficiency tab means graphical visualization of information received from the equipments
- ❖ The system also includes tabs for previous transactions and history, where the statuses of previous visits are easily accessed.

# SOFTGEN PTI – Test Results

---

Ability to grant a certain grace period to the customer for correction of discovered defects



If the defect is corrected within the allotted time, the vehicle can be re-inspected (at all PTI centers in the system)



Automatic definition of time and deadlines and assignment of relevant statuses (primary, repeat)

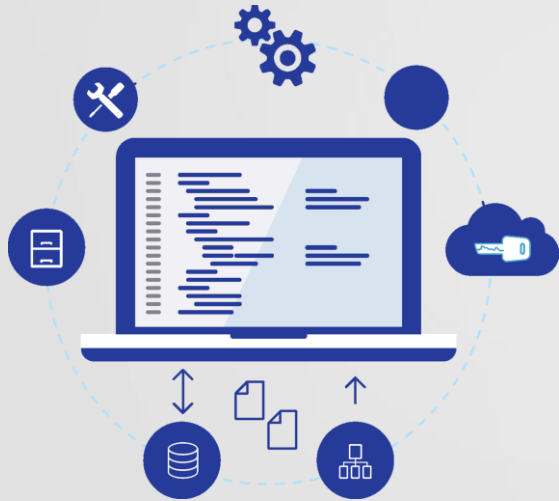


# SOFTGEN PTI - Additional components of the ecosystem

---

Softgen Group has developed and introduced a unified electronic system for periodic technical inspections and a statistical-analytical module for **LEPL Unified National Accreditation Authority - Accreditation Center**

The platform provides:



- ❖ Consolidate inspection results provided by PTI Centers in the form prescribed
- ❖ Check data validity
- ❖ Sorting and storing information centrally
- ❖ Production of multifunctional and multifaceted statistics and analytics
- ❖ All necessary functionalities and tools for the implementation of supervision

# SOFTGEN PTI - Advantages of the ecosystem

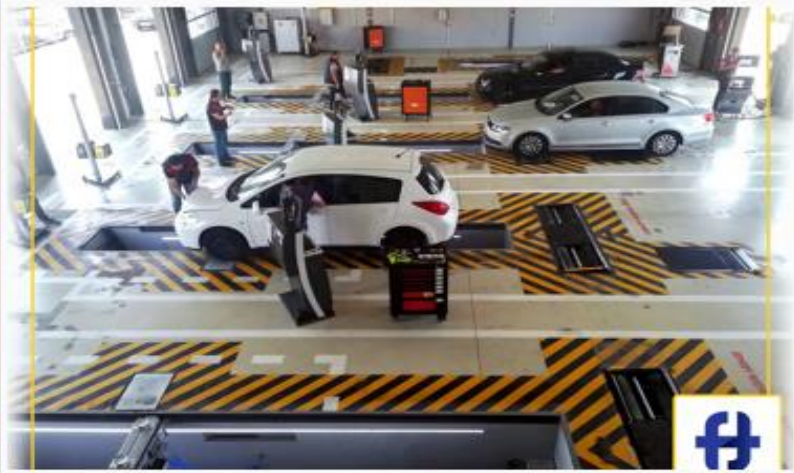
---

So, in a complex ecosystem, on the one hand, a set of functionalities for the management of technical inspection centers is implemented directly, and on the other hand - the complete toolkit for monitoring by the regulator

As a result the system integrates:

- ❖ Simple and friendly interface
- ❖ Maximum digitalization of processes
- ❖ Minimization of the human factor and prevent mistakes
- ❖ Maximization of automate processes and reduce vehicle inspection average time
- ❖ 24-hour uninterrupted video transmission
- ❖ Ability to create website for inspection center, booking system and simplified payment system
- ❖ Adaptation to legislative changes
- ❖ Unlimited integration and simplified operation of new equipments at the expense of many years of relationship with equipment manufacturing companies
- ❖ Realization of the experience accumulated in the process of practical cooperation with the private and project beneficiary public sector (Accreditation Center, MIA, Service Agency, Tbilisi City Hall, etc.) in the process of developing the system architecture.

# Photos



# SOFTGEN GROUP

[www.softgen.ge](http://www.softgen.ge)

Anna Politkovskaya st. N32  
(032) 205 43 43



**SOFTGEN  
GROUP**